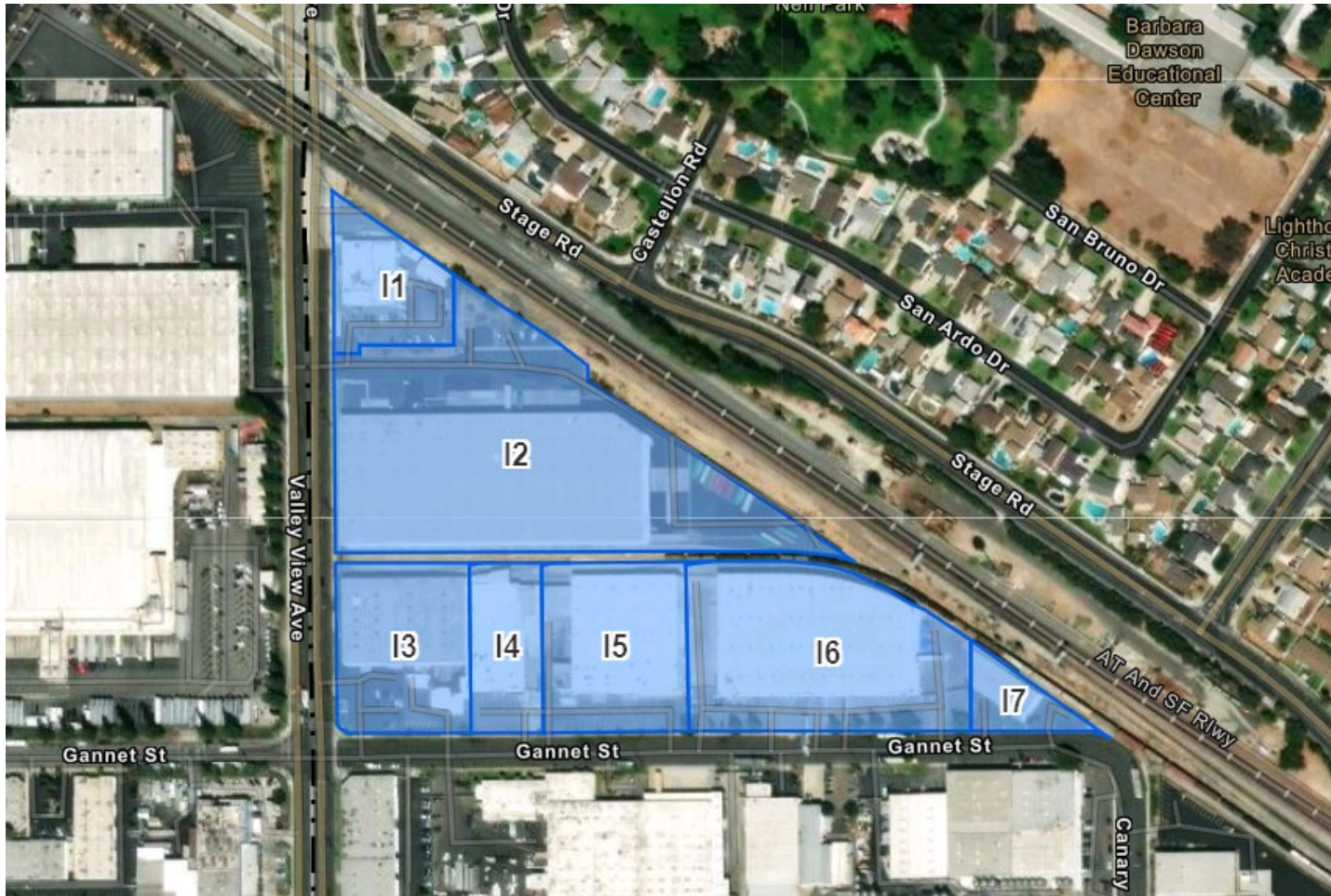




Proposed Industrial Sites

Housing Element 6th Cycle – 2021-2029



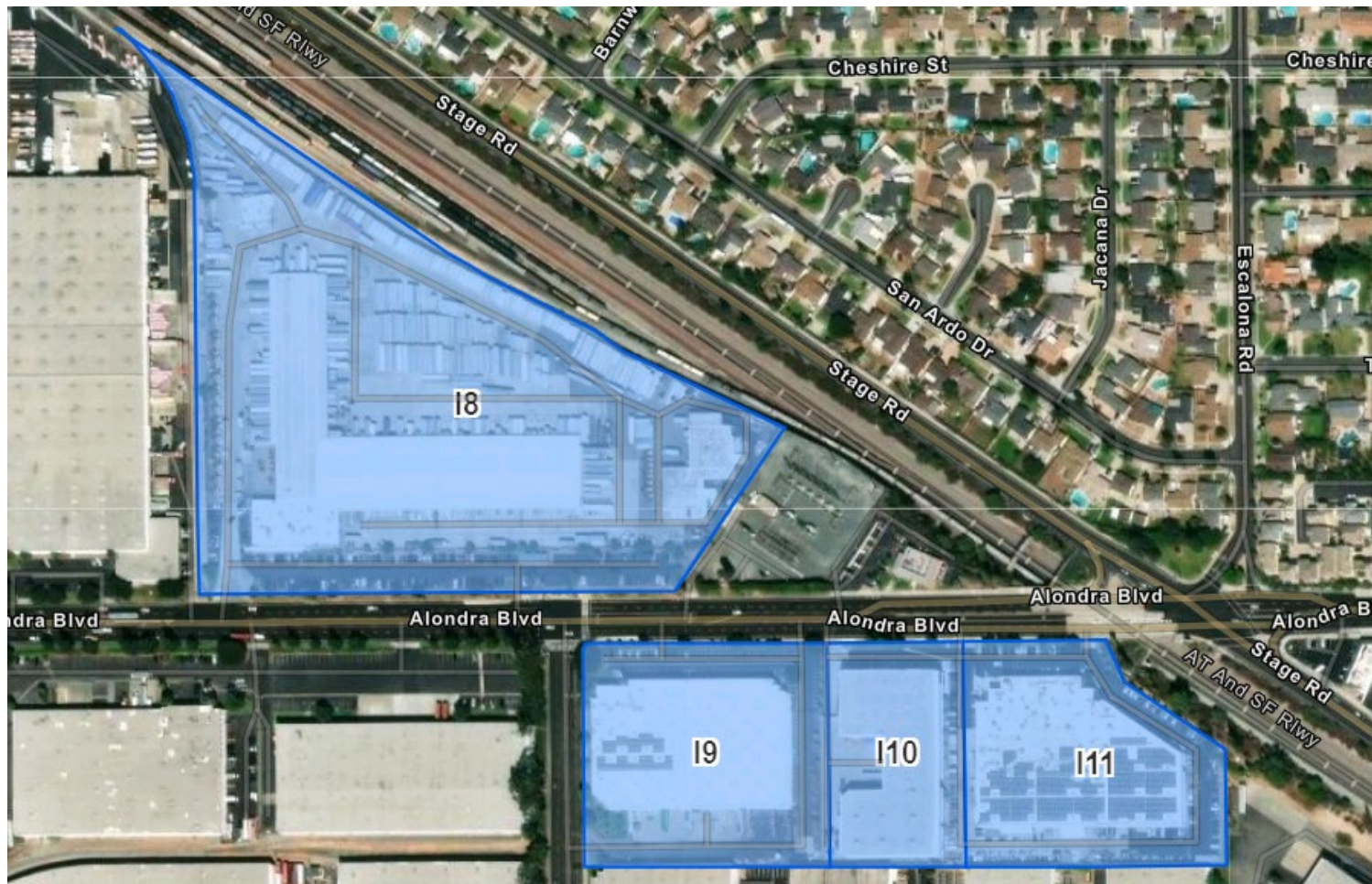
Allowed Use:
No Housing Allowed

Required Zone Change: Yes

Proposed Use:
Multi-Family
Senior Housing

Max Potential for Area: 325 DU

Site Number	AIN	Zoning	Existing Use	Acres	Density Range	Potential Capacity
I1	8069-009-021	M-2	SSDI- permanently clised	1.15	20-60	22
I2	8069-009-020	M-2	warehouse	6.37	20-60	127
I3	8069-009-010	M-2	distribution	1.87	20-60	37
I4	8069-009-012	M-2	plastic fabrication	1.02	20-60	20
I5	8069-009-018	M-2	plastic fabrication	2.03	20-60	40
I6	8069-009-016	M-2	furniture store	3.53	20-60	70
I7	8069-009-005	M-2	industrial	0.49	20-60	9



Allowed Use:
No Housing Allowed

Required Zone Change: Yes

Proposed Use:
Multi-Family
Senior Housing

Max Potential for Area: 546 DU

Site Number	AIN	Zoning	Existing Use	Acres	Density Range	Potential Capacity
18	8087-035-017	PUD	Trucking Company	15.73	20-60	314
19	7001-010-058	M-2	Warehousing, Distribution	4.67	20-60	93
110	7001-010-059	M-2	Warehousing, Distribution	2.64	20-60	52
111	7001-010-060	M-2	Warehousing, Distribution	4.37	20-60	87