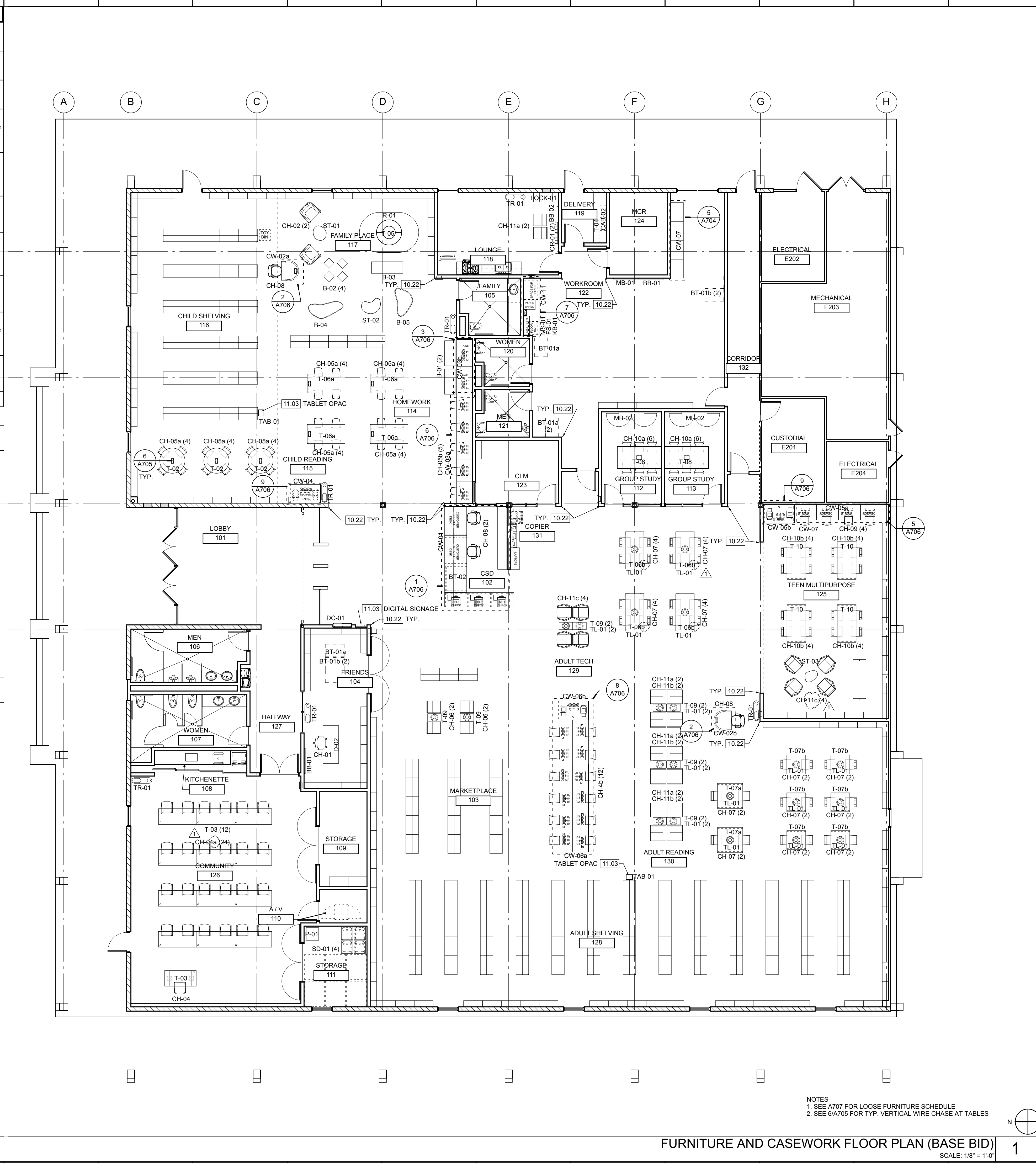


ROOM #	ROOM NAME	ITEM #	DESCRIPTION	DIMENSIONS	FINISHES	QTY	ELECTRICAL			NOTES
							POWER	DATA	USB	
102	CSD	CW-01	CUSTOMER SERVICE DESK AND SELF CHECK STATIONS	see drawings	Countertop: Avonite Acrylic Solid Surface, 12mm thick, Amber Glass K3-8560 Laminate: Wilsonart Asian Night 7949K-18 with Aeon finish	1				Lockable
117	FAMILY PLACE	CW-02a	INFORMATION POD	5'-0"W x 14"D x 12'-3"H	Countertop: Avonite Acrylic Solid Surface, 12mm thick, Amber Glass K3-8560 Laminate: Wilsonart Asian Night 7949K-18 with Aeon finish	1	2	2	2	Lockable
130	ADULT READING	CW-02b	INFORMATION POD	5'-0"W x 14"D x 12'-3"H	Countertop: Avonite Acrylic Solid Surface, 12mm thick, Amber Glass K3-8560 Laminate: Wilsonart Asian Night 7949K-18 with Aeon finish	1	2	2	2	Lockable
114	HOMEWORK	CW-03a	CHILD COMPUTER CARREL	Each with (1) ECA Cove with (3) AC, (2) USB charging and (2) RJ-45 Female. Female Barrel receptacles each; brushed clear anodized finish	Laminate: Wilsonart Berry Fizz 4935-07 with Aeon finish Divider: None	5	15	10	10	Route wiring from floor through solid wood legs to underside of table. Provide removable stainless steel cover over vertical wire channel through wood.
126	CHILD READING	CW-03b	TODDLER COMPUTER CARREL	Each with (1) ECA Cove with (3) AC, (2) USB charging and (2) RJ-45 Female. Female Barrel receptacles each; brushed clear anodized finish	Laminate: Wilsonart Berry Fizz 4935-07 with Aeon finish Divider: None	2	6	4	4	Coordinate location of receptacle with location of wall outlets
126	CHILD READING	CW-04	CHILD PRINT RELEASE STATION	With lockable lower laminate casework. With 3" grommets as directed by Owner's representative for wiring down to floor boxes	Laminate: Wilsonart Berry Fizz 4935-07 with Aeon finish Interior: white melamine	1	4	2	0	
125	TEEN MULTIPURPOSE	CW-05a	TEEN COMPUTER CARREL	Each with (1) ECA Cove with (3) AC, (2) USB charging and (2) RJ-45 Female. Female Barrel receptacles each; brushed clear anodized finish	Laminate: Wilsonart Berry Fizz 4935-07 with Aeon finish Divider: Translucent laminated glass per keynote 08.25	4	12	8	8	2
125	TEEN MULTIPURPOSE	CW-05b	TEEN PRINT RELEASE STATION	With lockable lower laminate casework. With 3" grommets as directed by Owner's representative for wiring down to floor boxes	Laminate: Wilsonart Berry Fizz 4935-07 with Aeon finish Interior: white melamine	1	4	2	0	
129	ADULT TECH	CW-06a	ADULT COMPUTER CARREL	Each with (1) ECA Cove with (3) AC, (2) USB charging and (2) RJ-45 Female. Female Barrel receptacles each; brushed clear anodized finish	Laminate: Wilsonart Berry Fizz 4935-07 with Aeon finish Divider: Translucent laminated glass per keynote 08.25	12	36	24	24	Route wiring from floor through solid wood legs to underside of table. Provide removable stainless steel cover over vertical wire channel through wood.
129	ADULT TECH	CW-06b	ADULT PRINT RELEASE STATION	With lockable lower laminate casework. With 3" grommets as directed by Owner's representative for wiring down to floor boxes	Laminate: Wilsonart Berry Fizz 4935-07 with Aeon finish Interior: white melamine	1	4	2	2	3
122	STAFF WORKROOM	CW-07	STORAGE CASEWORK	12'-0" W x 30"D x 34"H	Laminate: Wilsonart Berry Fizz 4935-07 with Aeon finish	1				Lockable

**CUSTOM CASEWORK SCHEDULE (BASE BID)** 2  
SCALE: NONE

CASEWORK CALLOUT NUMBER	EQUIPMENT		ELECTRICAL CONNECTIONS REQUIRED		COMMENTS
	IN CONTRACT	N.I.C., BY OWNER	POWER	DATA	
CW-01	HUMANSCALE CPU HOLDER CPU600; HUMAN SCALE KEYBOARD TRAY 5G 900 11R; HUMAN SCALE MONITOR ARM MODEL M2BW; RECESSED 3M BOOKCHECK UNIT MODEL 942; 3M SELF CHECK SYSTEM MODEL 6420	CPU; LCD MONITOR; TELEPHONE; LASER PRINTER; CASH REGISTER; BARCODE READER; RECEIPT PRINTER	6	4	CONFIRM INSTALL LOCATIONS WITH OWNER'S REPRESENTATIVE
CW-02a	HUMAN SCALE KEYBOARD TRAY 5G 900 11R; HUMAN SCALE MONITOR ARM MODEL M2BW	CPU; LCD MONITOR; BARCODE READER; RECEIPT PRINTER	2	2	CONFIRM INSTALL LOCATIONS WITH OWNER'S REPRESENTATIVE
CW-02b	HUMAN SCALE KEYBOARD TRAY 5G 900 11R; HUMAN SCALE MONITOR ARM MODEL M2BW	CPU; LCD MONITOR; BARCODE READER; RECEIPT PRINTER	2	2	CONFIRM INSTALL LOCATIONS WITH OWNER'S REPRESENTATIVE

**EQUIPMENT SCHEDULE (BASE BID)** 3  
SCALE: NONE



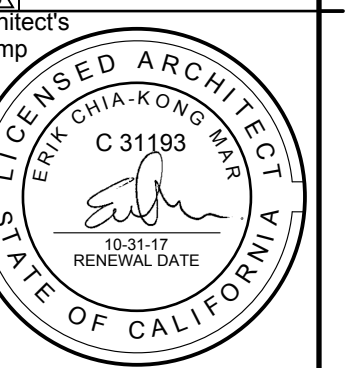
NOTES  
1. SEE A707 FOR LOOSE FURNITURE SCHEDULE  
2. SEE 6/A705 FOR TYP. VERTICAL WIRE CHASE AT TABLES

**FURNITURE AND CASEWORK FLOOR PLAN (BASE BID)**  
SCALE: 1/8" = 1'-0"

**La Mirada Library**  
13800 La Mirada Drive  
La Mirada, CA 90638

**REVISIONS**

NO.	DESCRIPTION
1	ADDENDUM TO BIDDERS 03 MAY 2016
2	
3	
4	
5	
6	
7	
8	
9	
10	
11	
12	
13	
14	
15	
16	
17	
18	
19	
20	



architect  
**EMC**  
3341 Helms Avenue  
Culver City, CA 90232  
Telephone 310 508 9390  
Facsimile 310 873 3740  
e-mail: erik@emcstudio.com

engineer's stamp

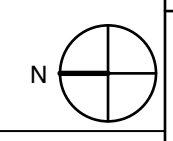
engineer

project no. 2015\_01  
issue date 5/3/16  
scale as noted

drawing title  
**FURNITURE AND CASEWORK FLOOR PLAN (BASE BID)**

drawing number

**A204**



1